

ASX ANNOUNCEMENT AND MEDIA RELEASE

25 August 2015

RC SAMPLES SUBMITTED TO LABORATORY

HIGHLIGHTS

- RC drill chips are visibly similar to the 67m @ 3.10 g/t drill hole directly 100m east
- RC drill chips are hydrothermally altered volcanoclastics with disseminated pyrite

Cardinal Resources Limited (ASX: CDV) ("Cardinal" or "the Company") announces that samples from RC drill hole NMRC472-756 (Figure 1) have been submitted to the SGS Laboratory, Burkina Faso for fire assaying. Results are expected within two weeks.

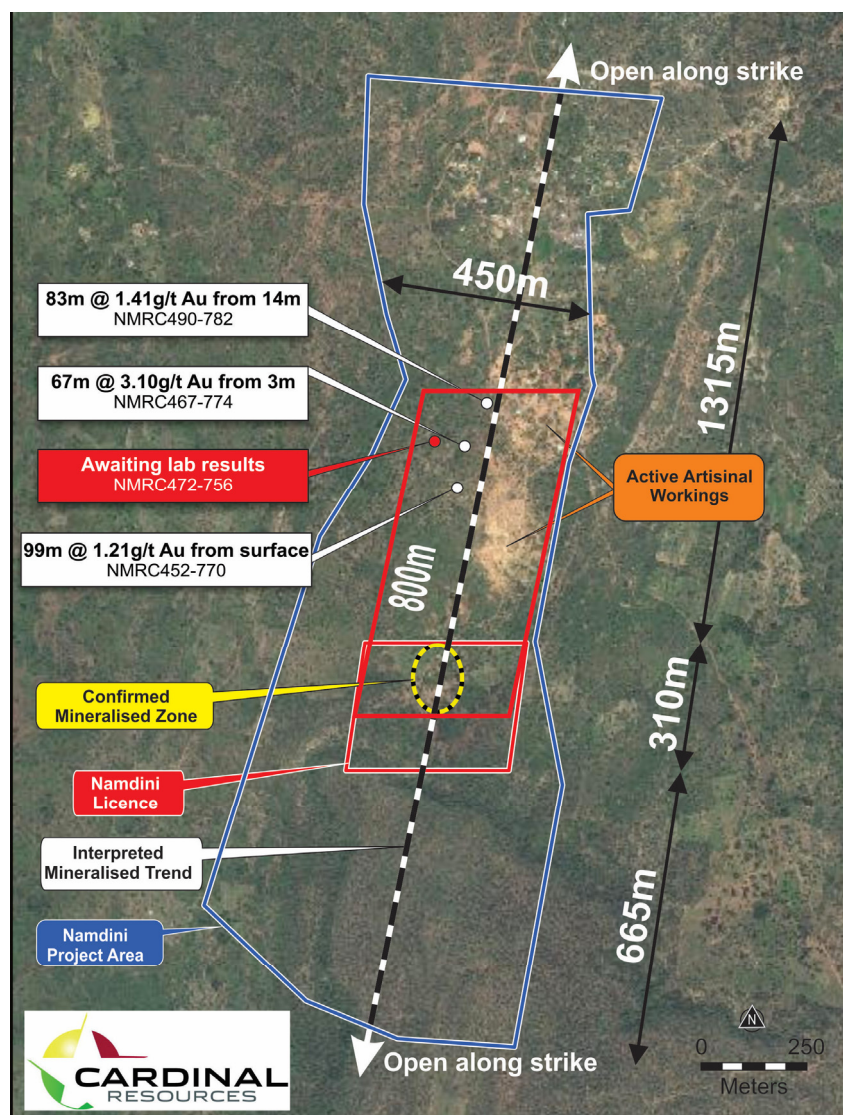


Figure 1: Locality of Drill Hole NMRC472-756

Cardinal Resources Limited ABN 56 147 325 620

www.cardinalresources.com.au

Ghana: Durugu Residential Area, Kumbosco, Bolgatanga, Ghana P: +233 (0) 261905220 SKYPE: cardinal.archie

Australia: Level 1, 115 Cambridge Street, West Leederville, Perth, 6007 P: +61 (8) 9322 6600 F: +61 (8) 9322 6610

This drill hole was drilled within the recently acquired area north of the Namdini Mining Licence (“**Namdini**”), located within Cardinal’s Namdini Project in Ghana (Figure 2).

The drill hole is located 100m west of drill hole NMRC467-774, which contains a shallow high grade gold intersection of 67m @ 3.10 g/t mostly within altered volcaniclastics with minor mineralised granitoids.

The RC drill chips are hydrothermally altered volcaniclastics containing disseminated pyrite and quartz veinlets, which are very similar to the drill chips observed within drill hole NMRC467-774. No monzonite granitoid chips were observed within this drill hole.

The presence of hydrothermally altered, pyrite-bearing volcaniclastic rocks 500m north along strike from the Confirmed Mineralised Zone is very encouraging as this indicates that the mineralised zone continues north along strike, which would considerably enlarge the gold inventory of the expanded Namdini Project.

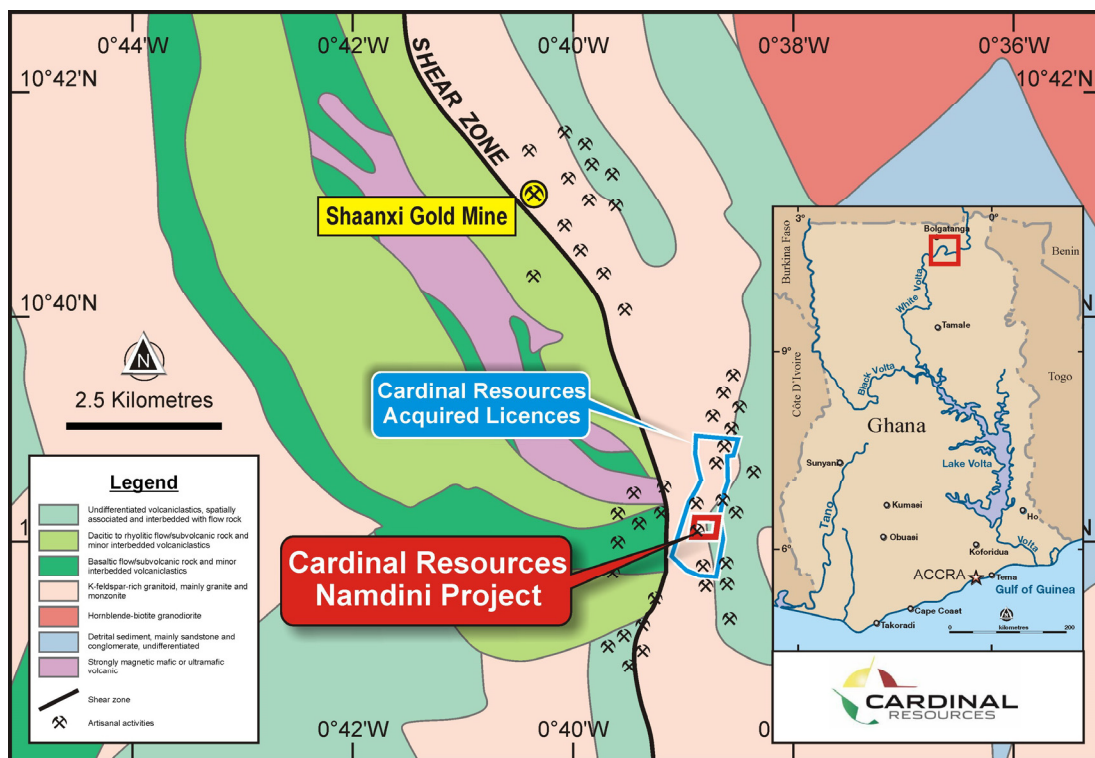


Figure 2: Namdini Project Proximity Map

MONITORING OF DRILLING PROGRAMS

Cardinal’s technical and management team evaluates all of the available data on a daily basis with the main focus being the expansion of the gold potential for the expanded licence areas.

Cardinal is the owner and operator of its own drill rig and has established an express assaying service with its drilling results, enabling the Company to continuously improve its drill plan strategy as new information becomes available.

The Company will continue drilling selective holes, submitting the samples and be on standby as results are received. Once the results have been assessed, Cardinal can plan further drill holes to maximise expansion of the gold inventory within the Namdini Project.

Cardinal Resources Limited ABN 56 147 325 620

www.cardinalresources.com.au

Ghana: Durugu Residential Area, Kumbosco, Bolgatanga, Ghana P: +233 (0) 261905220 SKYPE: cardinal.archie

Australia: Level 1, 115 Cambridge Street, West Leederville, Perth, 6007 P: +61 (8) 9322 6600 F: +61 (8) 9322 6610

For further information contact:

Archie Koimtsidis
Managing Director
Cardinal Resources Limited
P: +233 (0)26 190 5220
Skype: cardinal.archie

Competent Person Statement:

This ASX announcement contains information extracted from the following reports which are available on the Company's website at www.cardinalresources.com.au

- 18 August 2015 – 67m High Grade Gold Zone at Namdini Extension

The Company confirms that it is not aware of any new information or data that materially affects the information included in any original market announcements referred to in this report, and that all material assumptions and technical parameters underpinning this announcement continue to apply and have not materially changed. The Company confirms that the form and context in which the Competent Person's findings are presented have not been materially modified from the original market announcement.

Disclaimer

This ASX announcement (Announcement) has been prepared by Cardinal Resources Limited (ABN: 56 147 325 620) ("Cardinal" or "the Company"). It should not be considered as an offer or invitation to subscribe for or purchase any securities in the Company or as an inducement to make an offer or invitation with respect to those securities. No agreement to subscribe for securities in the Company will be entered into on the basis of this Announcement.

This Announcement contains summary information about Cardinal, its subsidiaries and their activities which is current as at the date of this Announcement. The information in this Announcement is of a general nature and does not purport to be complete nor does it contain all the information which a prospective investor may require in evaluating a possible investment in Cardinal.

By its very nature exploration for minerals is a high risk business and is not suitable for certain investors. Cardinal's securities are speculative. Potential investors should consult their stockbroker or financial advisor. There are a number of risks, both specific to Cardinal and of a general nature which may affect the future operating and financial performance of Cardinal and the value of an investment in Cardinal including but not limited to economic conditions, stock market fluctuations, gold price movements, regional infrastructure constraints, timing of approvals from relevant authorities, regulatory risks, operational risks and reliance on key personnel and foreign currency fluctuations.

Certain statements contained in this announcement, including information as to the future financial or operating performance of Cardinal Resources and its projects, are forward-looking statements that:

- may include, among other things, statements regarding targets, estimates and assumptions in respect of mineral reserves and mineral resources and anticipated grades and recovery rates, production and prices, recovery costs and results, capital expenditures, and are or may be based on

Cardinal Resources Limited ABN 56 147 325 620

www.cardinalresources.com.au

Ghana: Durugu Residential Area, Kumbosco, Bolgatanga, Ghana P: +233 (0) 261905220 SKYPE: cardinal.archie

Australia: Level 1, 115 Cambridge Street, West Leederville, Perth, 6007 P: +61 (8) 9322 6600 F: +61 (8) 9322 6610

assumptions and estimates related to future technical, economic, market, political, social and other conditions;

- are necessarily based upon a number of estimates and assumptions that, while considered reasonable by Cardinal Resources, are inherently subject to significant technical, business, economic, competitive, political and social uncertainties and contingencies; and,
- involve known and unknown risks and uncertainties that could cause actual events or results to differ materially from estimated or anticipated events or results reflected in such forward-looking statements.

Cardinal Resources disclaims any intent or obligation to update publicly any forward-looking statements, whether as a result of new information, future events or results or otherwise. The words 'believe', 'expect', 'anticipate', 'indicate', 'contemplate', 'target', 'plan', 'inventory', 'intends', 'continue', 'budget', 'estimate', 'may', 'will', 'schedule' and similar expressions identify forward-looking statements.

All forward looking statements made in this announcement are qualified by the foregoing cautionary statements. Investors are cautioned that forward-looking statements are not guarantees of future performance and accordingly investors are cautioned not to put undue reliance on forward-looking statements due to the inherent uncertainty therein.

No verification: Although all reasonable care has been undertaken to ensure that the facts and opinions given in this Announcement are accurate, the information provided in this Announcement has not been independently verified.